



Welcome To **Vertex Business Space**



Vertex Business Space

Smart Spaces, Delivered Right

Creating intelligent business spaces where people belong, perform, and grow

Vertex Business Space partners with organizations to transform workplaces into **future-ready environments that blend culture, technology, operational readiness, and business performance.**

We combine **program leadership, construction precision, MEP depth, and smart workplace integration** to deliver spaces that are commercially controlled, digitally intelligent, and deeply human-centered.

At Vertex, we do not simply build offices. We create **business spaces that strengthen culture, enable collaboration, and support long-term growth.**



Table Of Contents

01.

ABOUT US

Our Mission, Our Vision,
Our Belief, Founder
Message

02.

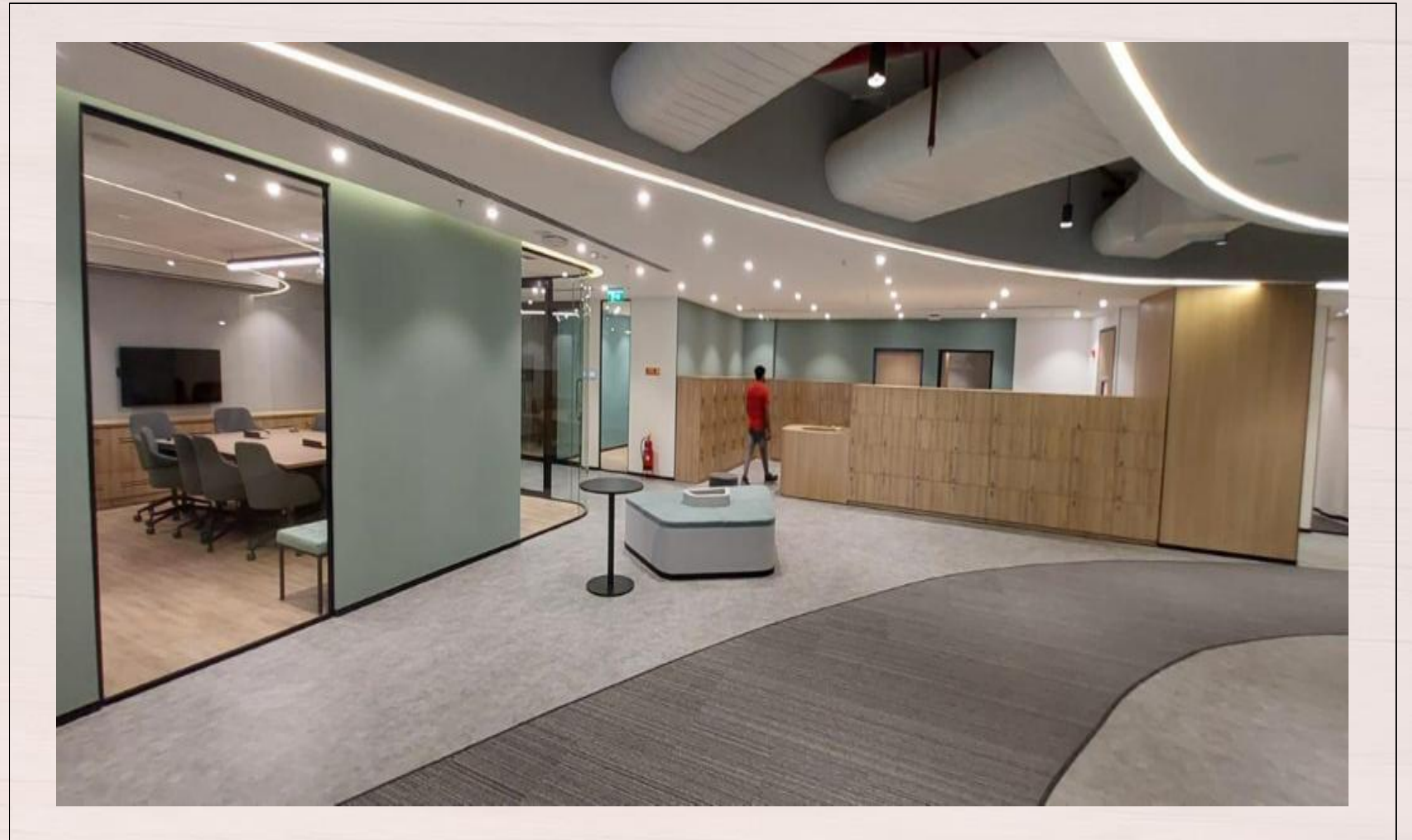
Core Services

PMC, D & B Delivery,
Workplace & IT MEP,
Portfolio & Program.

03.

Our Projects

Our Past Projects



01.

About Us

Vertex Business Space

Is a next-generation workspace transformation and delivery partner

Vertex Business Space is a next-generation **workspace transformation and delivery partner** specializing in **Project Management Consultancy (PMC), Design & Build, and intelligent workplace execution.**

Our strength lies in our founder-led model, bringing together deep expertise across:

- **Portfolio & Program Management**
- **PMC and Business Development**
- **General Contracting and Construction Execution**
- **MEP Engineering and Technical Assurance**
- **IT Infrastructure and Smart Systems Enablement**

This integrated capability allows us to bridge the gap **between boardroom strategy and flawless on-ground delivery**, helping clients create workspaces that are operationally seamless, commercially disciplined, and experience-led.

Our Vision & Mission

OUR MISSION

Our mission is to transform workplaces into high-performing, future-ready environments by combining strategic program leadership, construction excellence, MEP expertise, and smart workplace integration. We are committed to delivering commercially efficient, digitally advanced, and human-centered spaces.

OUR VISION

Vertex Business Space envisions becoming a trusted partner for organizations seeking environments that seamlessly integrate culture, technology, and human experience—shaping workplaces that are not only efficient and future-ready but also inspiring, adaptive, and built for long-term success.





Our **Belief**

***Workspaces that create
belonging***

We believe a workspace is **far more than a place where people come to work.**

It is where **culture is shaped, collaboration is strengthened, and people develop a genuine sense of belonging.**

Every decision we make — from **adjacency planning and circulation to AV, IAQ, thermal comfort, smart controls, and wellbeing** — is guided by one principle:

"A great workspace should make people feel connected to the organization's purpose, brand, and ambition."

Our This philosophy enables our clients to create workplaces that support:

- **Talent attraction and retention**
- **Return-to-office experience**
- **Productivity and collaboration**
- **Employee pride**
- **Culture reinforcement**
- **Brand identity in physical form**

At **Vertex**, every workplace is designed to be an **extension of the client's culture and future vision.**

Founder's Message

Vertex Business Space was founded on a simple but powerful belief:

"Great workplaces drive business performance because they bring people, technology, and culture together in the right way."

As founders, we bring together complementary strengths across **Portfolio and Program leadership, PMC and Business development, General contracting, and MEP Engineering**, shaped by years of delivering complex workplace and real estate programs across multiple markets.

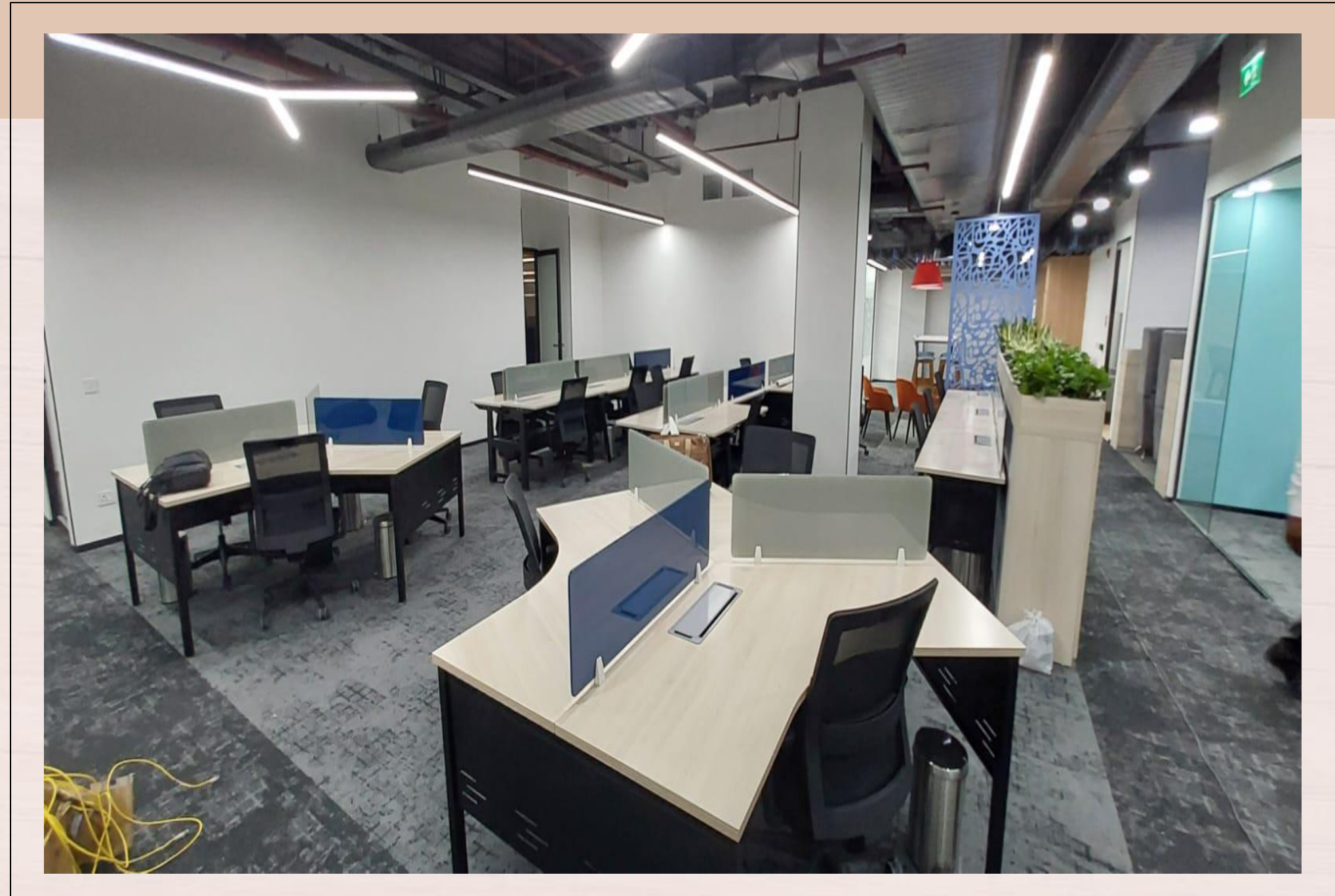
We created Vertex to solve a clear gap in the market:

clients often have to choose between **strategic advisors who do not execute, and contractors who may not fully understand the business, technology, and employee experience outcomes behind a workspace transformation.**

Vertex was built to bridge that gap.

Our promise is to combine **boardroom-level program confidence with on-ground delivery precision**, ensuring every workplace is commercially controlled, technically robust, digitally intelligent, and deeply aligned to how people work and belong.

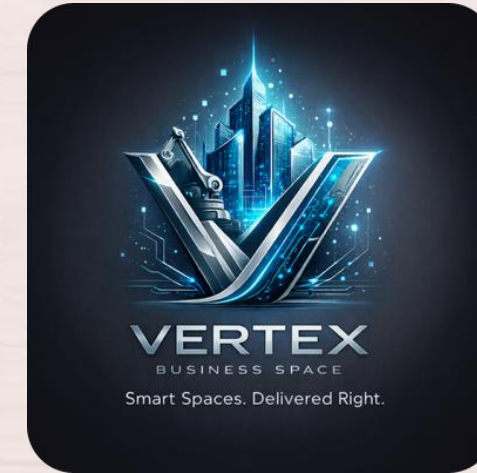
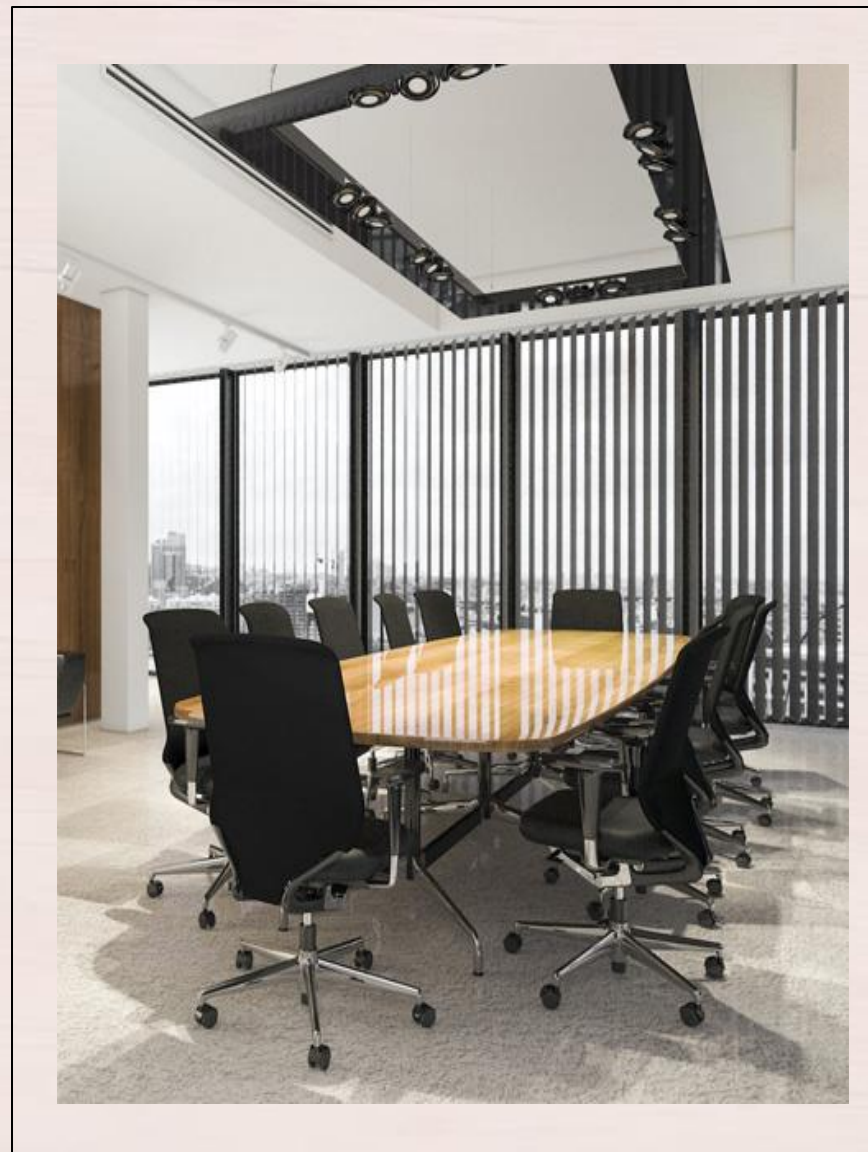




02.

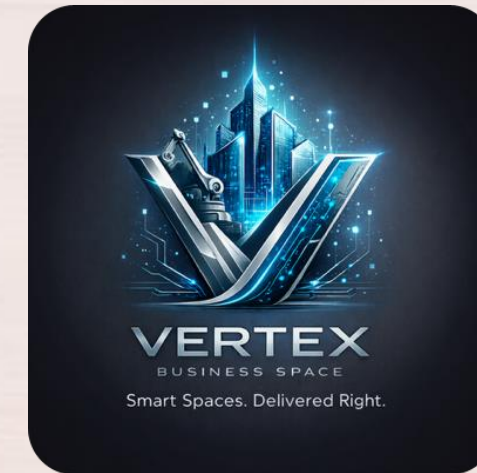
Core Services & Expertise

1. Project Management Consultancy (PMC)



- Program Governance
- Risk, cost, and schedule control
- Stakeholder and vendor management
- Executive reporting and steering support
- Change control and commercial management
- Day 1 readiness and transition planning

2. Design & Build Delivery



- Workplace strategy translation into execution
- Interior fit-out and construction management
- Workplace standards implementation
- Phased occupancy and handover
- Quality assurance and compliance governance
- Authority approvals and closeout management

3. Smart Workplace & IT Infrastructure



- IT and network infrastructure readiness
- AV / VC collaboration technology
- Building Management System (BMS) integration
- Occupancy analytics
- Sensor-led IAQ and environmental intelligence
- Smart controls and automation enablement

4. MEP & Technical Assurance



- **MEP coordination**
- **Fire Life Safety alignment**
- **Thermal comfort optimization**
- **Indoor air quality strategy**
- **Critical systems review**
- **Engineering design validation**
- **Technical due diligence**
- **Base-build surveys**

5. Portfolio & Program Advisory



- **Multi-city office rollouts**
- **GCC and HQ setup advisory**
- **CAPEX optimization**
- **Delivery operating models**
- **Recovery and acceleration strategy**
- **Portfolio transformation roadmaps**
- **Leadership decision support**



Why Clients **Choose Vertex**

— *OUR MARKET EDGE*

Integrated strategy to execution

We provide a seamless model from workplace vision to handover and Day 1 readiness.

Smart workplace differentiation

Technology, IT readiness, and intelligent controls are embedded from the beginning.

Founder-led accountability

Clients work directly with senior decision-makers who own outcomes.

Commercial discipline

Strong governance on budget, risk, change, and recovery actions.

Day 1 business readiness

We ensure spaces are not just built, but fully operational from move-in.

Belonging-led design philosophy

We create environments that strengthen culture, employee experience, and business identity.



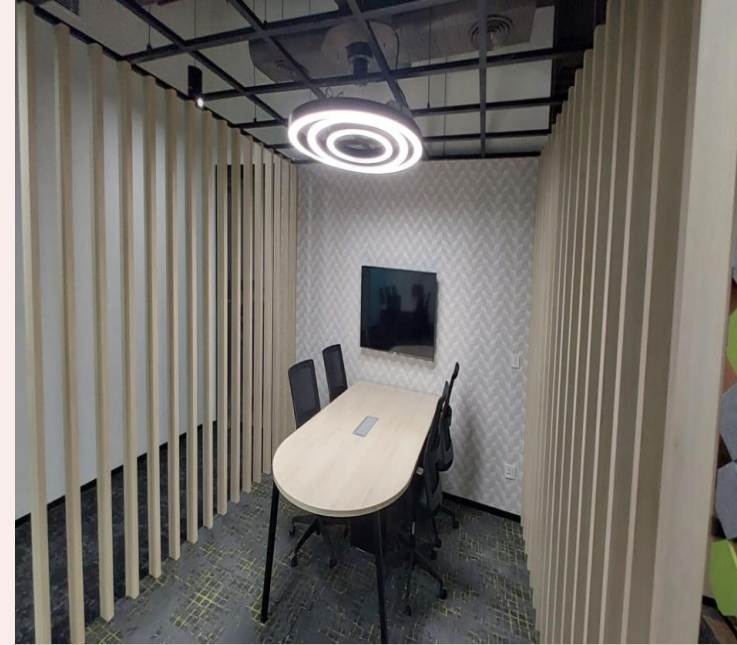


Our Delivery **Journey**

How Vertex Delivers Certainty



D



D



D

Design

Translate workplace strategy into functional, human centered, smart environments.

D

Digitize

Integrate IT, AV, BMS, and intelligent workplace systems.

D

Discover

Understand business ambition, culture, technology, and growth needs.



Deliver

Execute with program controls, technical assurance, and commercial rigor.



Day 1 Ready

Ensure the workspace is operationally seamless, experience-led, and future scalable.



We combine the **discipline of a program office, the precision of engineering, the speed of a contractor,** and the **intelligence of smart infrastructure.**

Vertex Business Space delivers workspaces that are **smarter, faster, and built** for business impact.

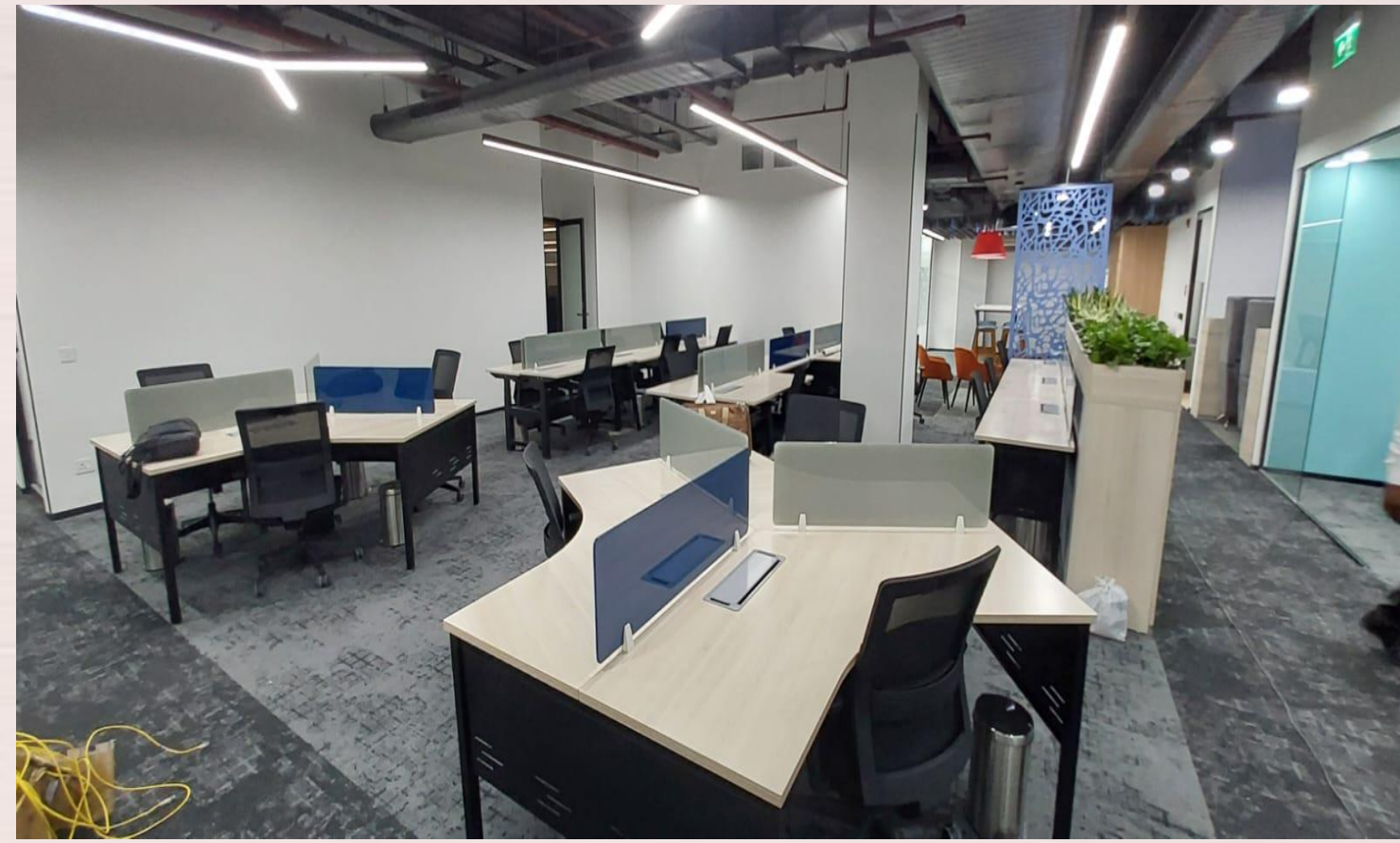
Smart Spaces. Delivered Right.

Our Promise



03.

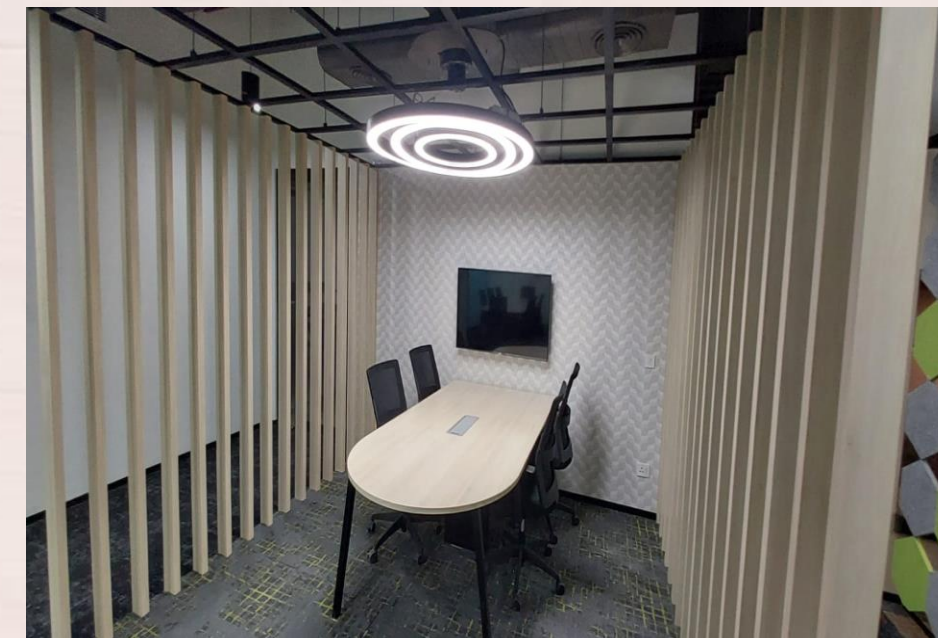
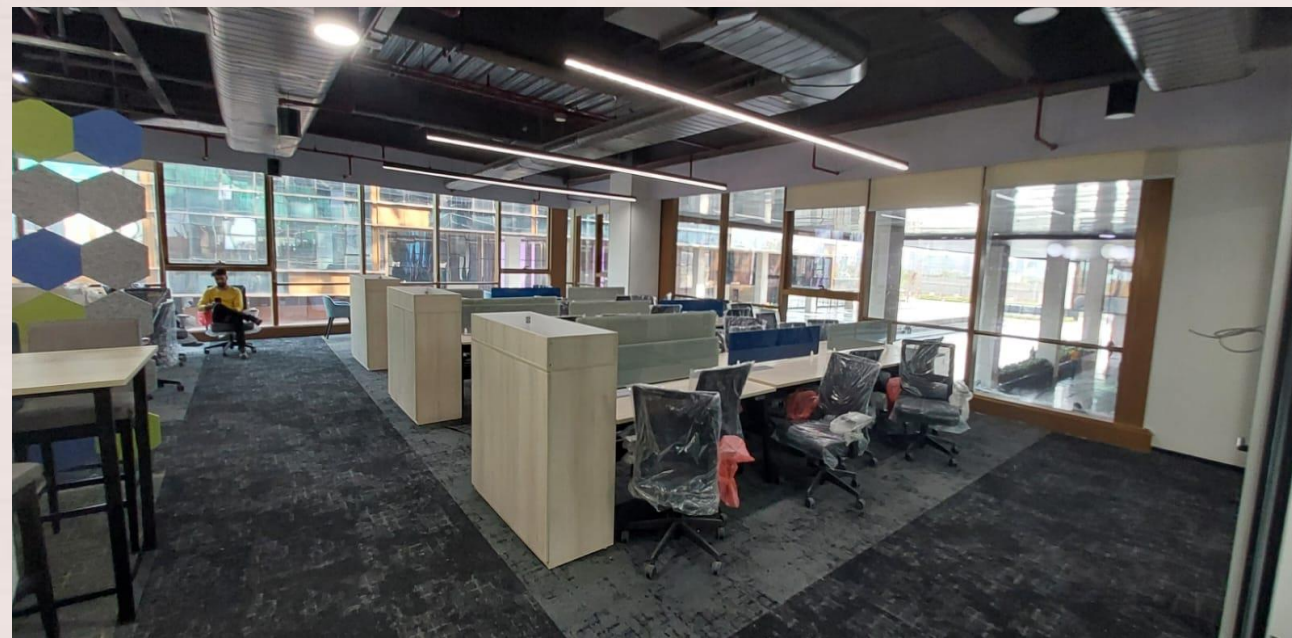
Vertex Business Space Projects



EPAM

DLF Downtown, Gurugram | 25,000 sq. ft | New Fit out project

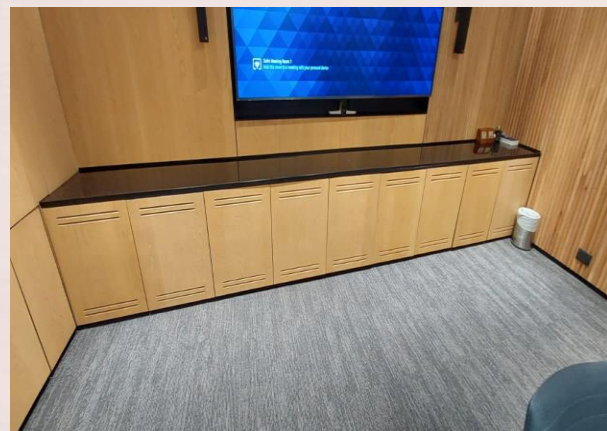
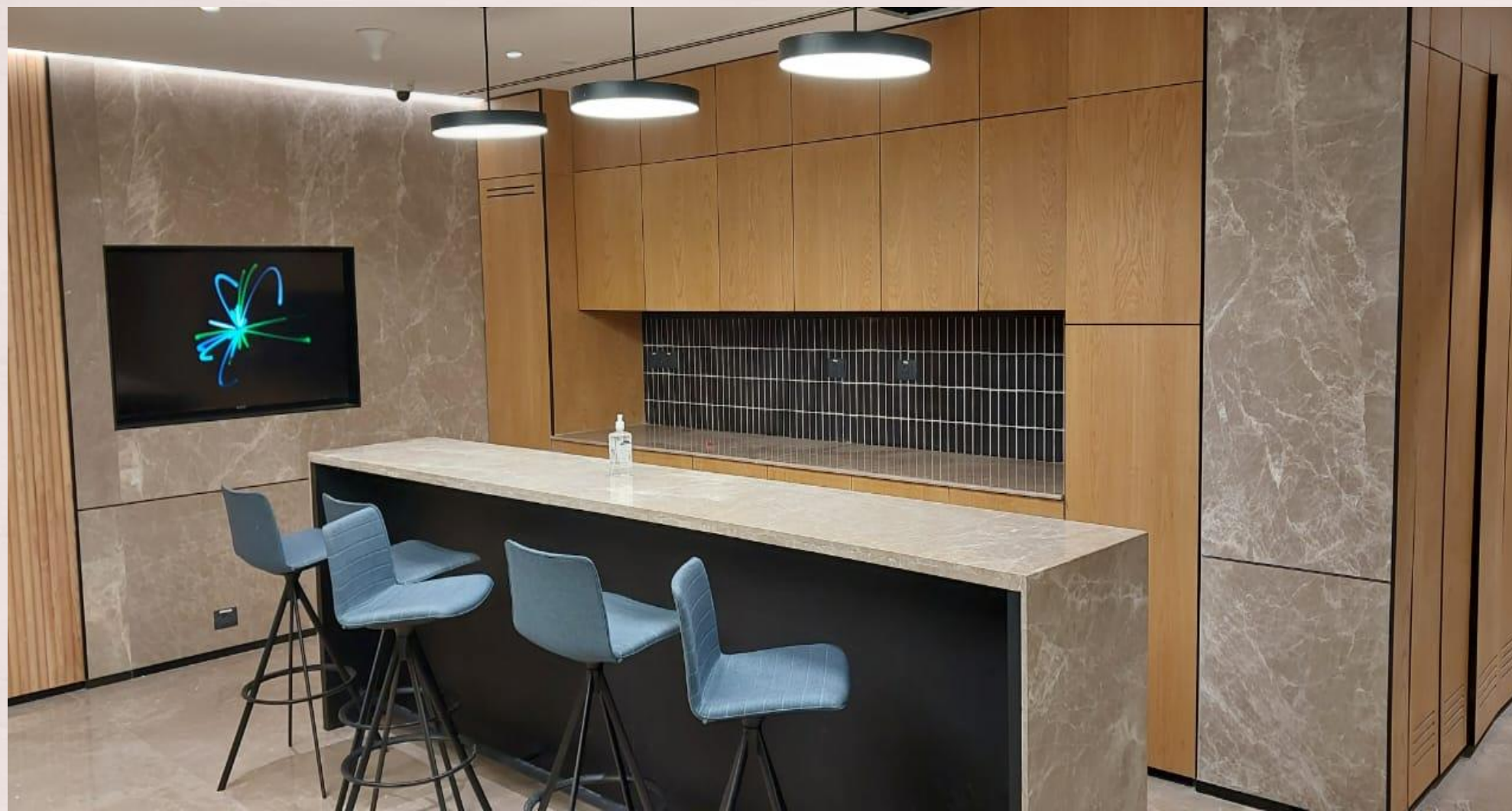
Delivery Time: 90 days



EPAM

DLF Downtown, Gurugram | 25,000 sq. ft | New Fit out project

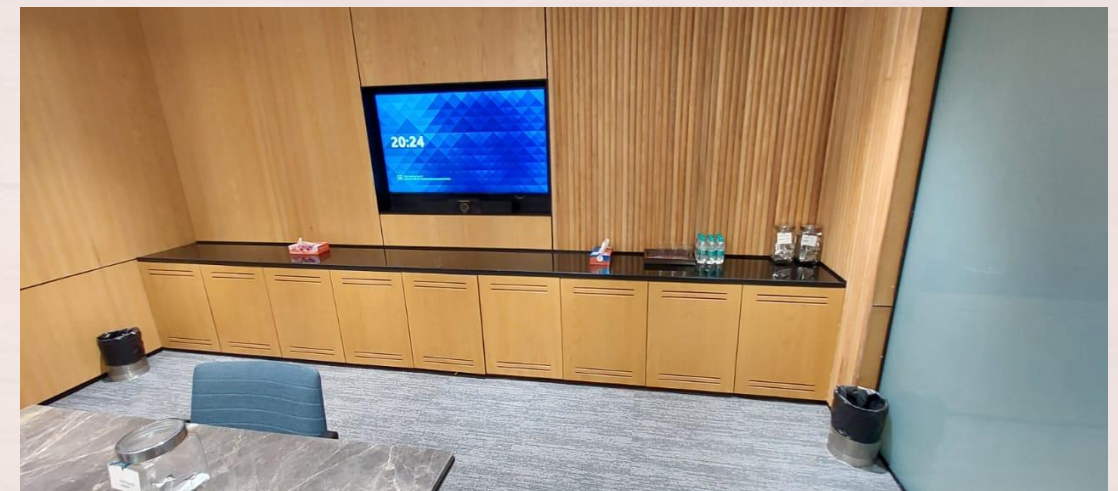
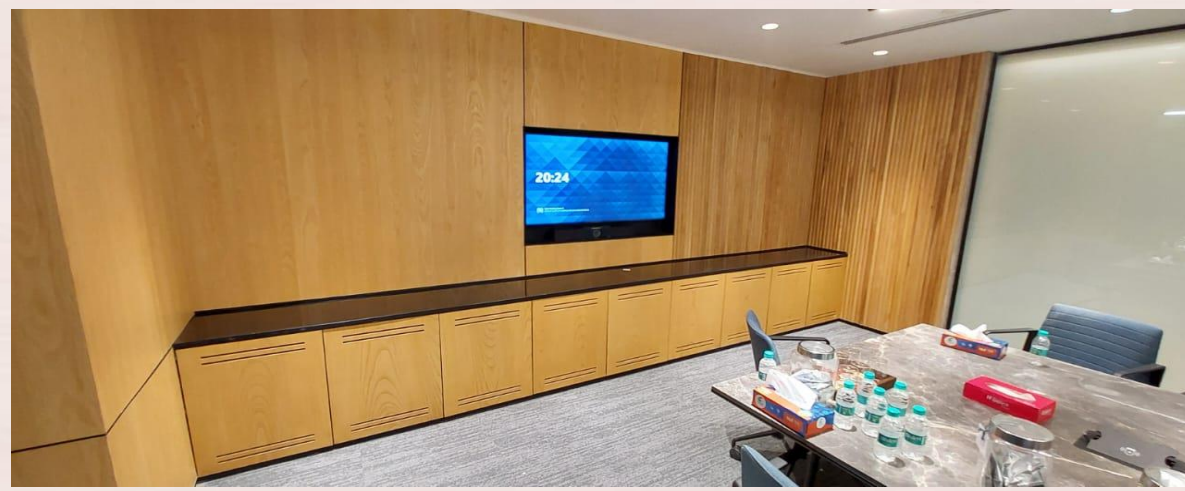
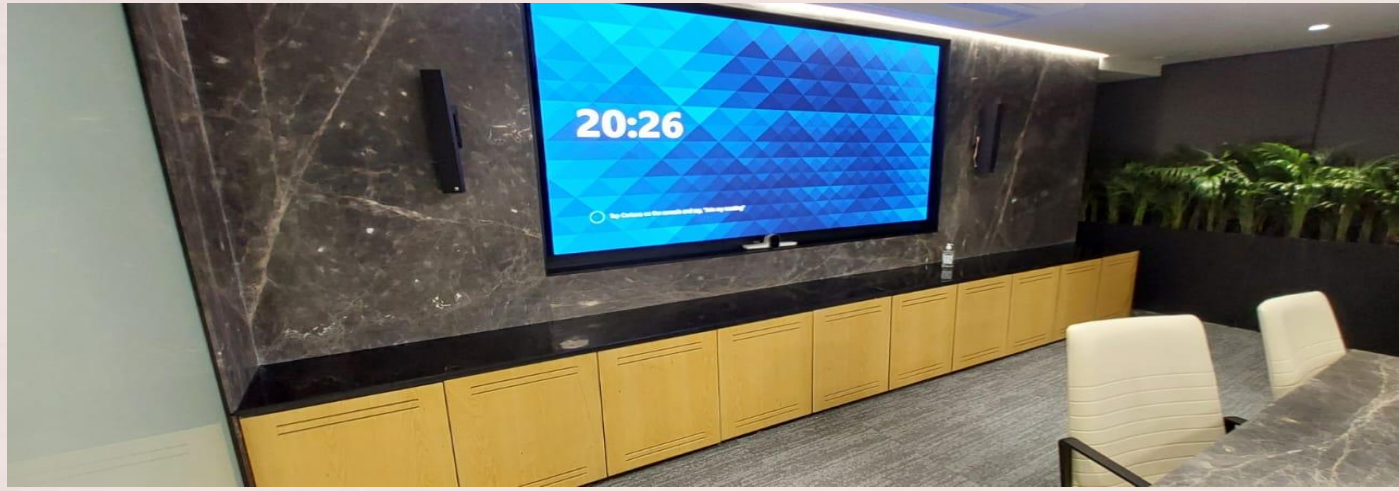
Delivery Time: 90 days



TRILEGAL

Prius Platinum, Saket, New Delhi | 50,000 sq. ft | Interior Work

Delivery Time: 90 days



TRILEGAL

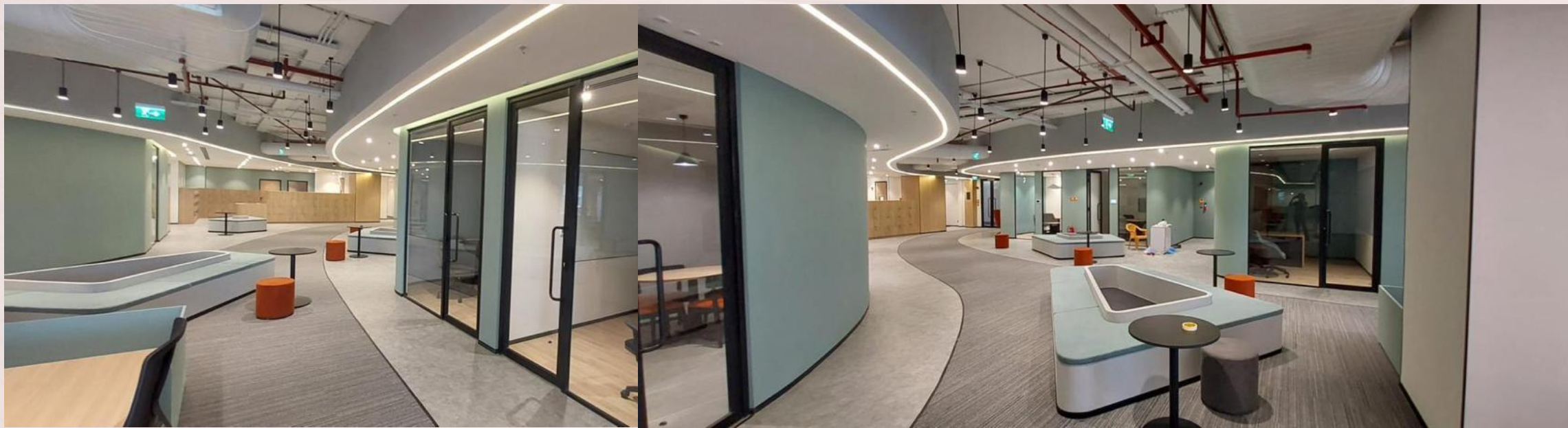
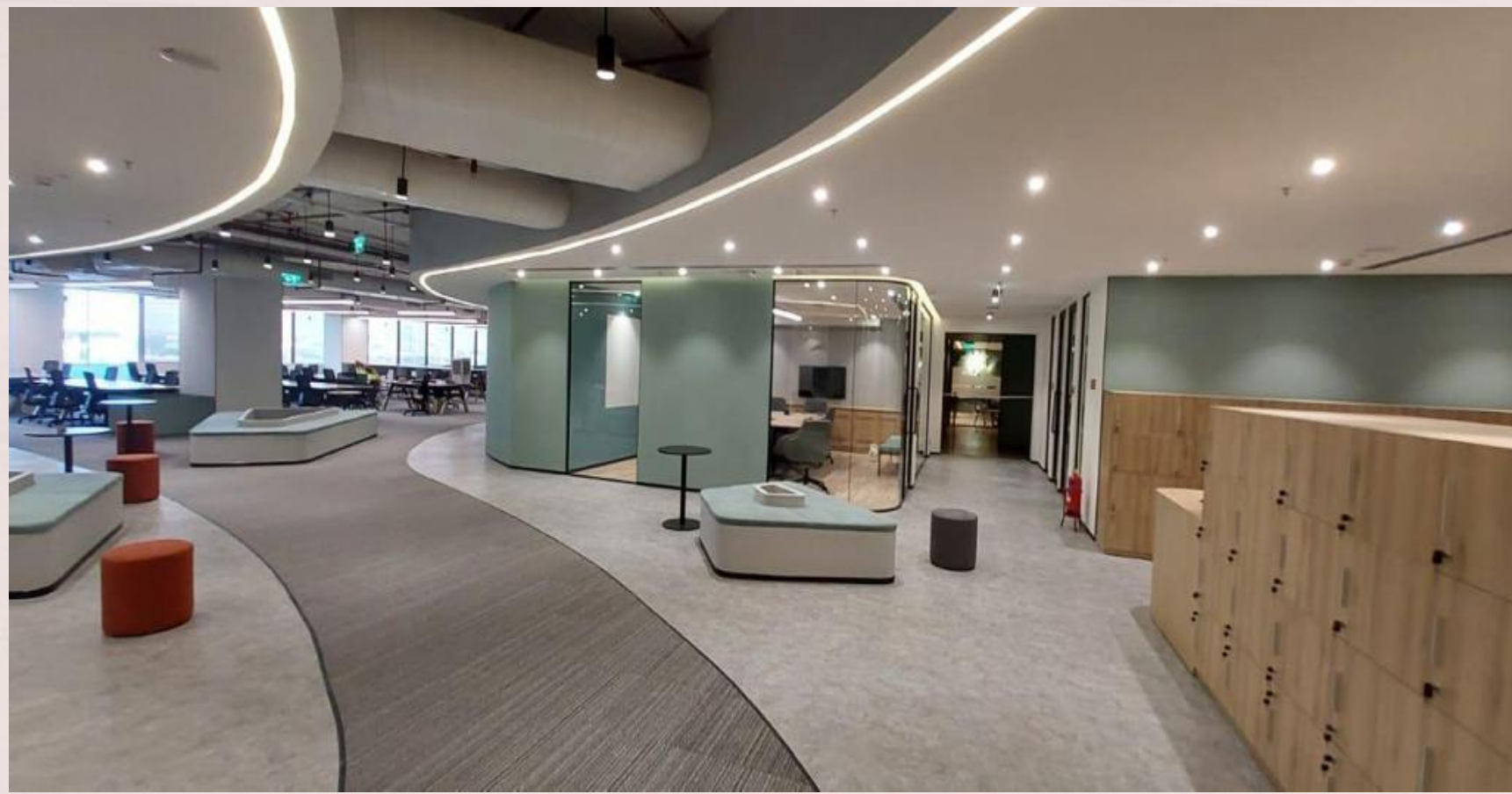
Prius Platinum, Saket, New Delhi | 50,000 sq. ft | Interior Work

Delivery Time: 90 days



NOMURA RESEARCH INSTITUTE

Building 5, DLF Cyber City, Gurugram | 12,000 sq. ft | New Fit out project | Delivery Time: 60 days



NOMURA RESEARCH INSTITUTE

Building 5, DLF Cyber City, Gurugram | 12,000 sq. ft | New Fit out project | Delivery Time: 60 days



Our Key Clients

wework

ReNew
POWER

simpliwork

NRI 未来創発
Dream up the future.

noise

novo AECOM

INDUSLAW
THOUGHT LEADERSHIP ... APPLIED

<epam>

TRILEGAL

MAX
HEALTHCARE

lenskart



www.vertexbusinessspace.com

Contact Us

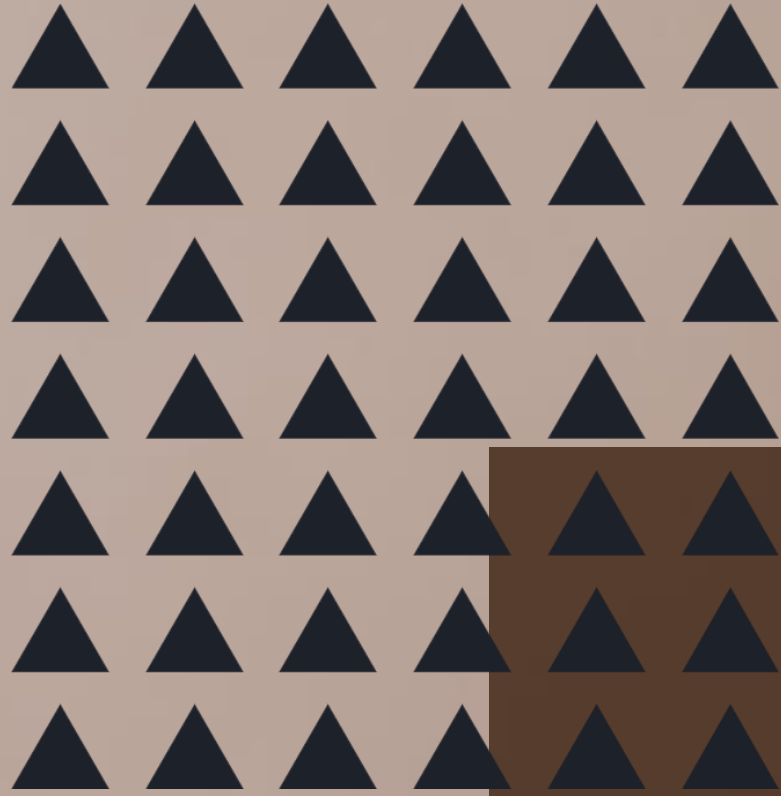
VERTEX BUSINESS SPACE

CONTACT NO : +91-9560012367

EMAIL : info@vertexbusinessspace.com

WEBSITE ADD : www.vertexbusinessspace.com

SOCIAL MEDIA : [@vertexbusinessspace](https://www.instagram.com/vertexbusinessspace)



Thank you!

You can contact us:
info@vertexbusinessspace.com

